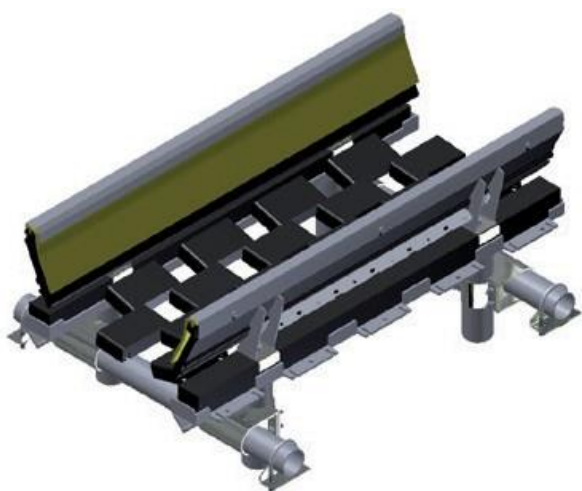




# SPARGAMAT EX

## PRODUCT FEATURES

- The **SPARGAMAT EX** offers three degrees of freedom :
  - **the flexibility of the belt** (due to its position relative to the damping blocks)
  - **the chains' vertical movement** when material falls on the blocks
  - **the flexibility of the lateral rubber absorbers** placed under the chains
- Available in standard lengths of **1200, 1500 and 1800mm** and in three different versions for **varying lump sizes (up to 500mm / 20 in.)**  
For larger lump sizes, consult with us.



## DYNAMIC IMPACT CRADLE WITH SEALING PANELS

- The **SPARGAMAT EX** is an impact cradle mounted on shock-absorbing blocks. It **eliminates the needs for idlers and skirt boards** and offers **excellent sealing capacities** at loading points.
- It **increases the lifespan of the belt**, which is maintained between the sealing panels and the Polyspar inside seal plate.

### The **SPARGAMAT EX** :

- eliminates nip points at loading zones
- eliminates the need for metal skirt boards
- improves belt tracking

Thanks to the **SPARGAMAT EX** chain system, **adjustments can be made easily, quickly and precisely.**

For cases where belt tracking is difficult, such as with reversing belts, the **SPARGAMAT EX** is available in auto-centering AC model.



**R. BRUNONE**

CONTAINMENT • OPTIMISATION • SAFETY OF CONVEYORS

1, rue de la Cressonnière  
27950 Saint-Marcel, France  
Tél.: +33 (0)2 32 64 20 20

E-mail: [commercial@brunone-innovation.fr](mailto:commercial@brunone-innovation.fr)